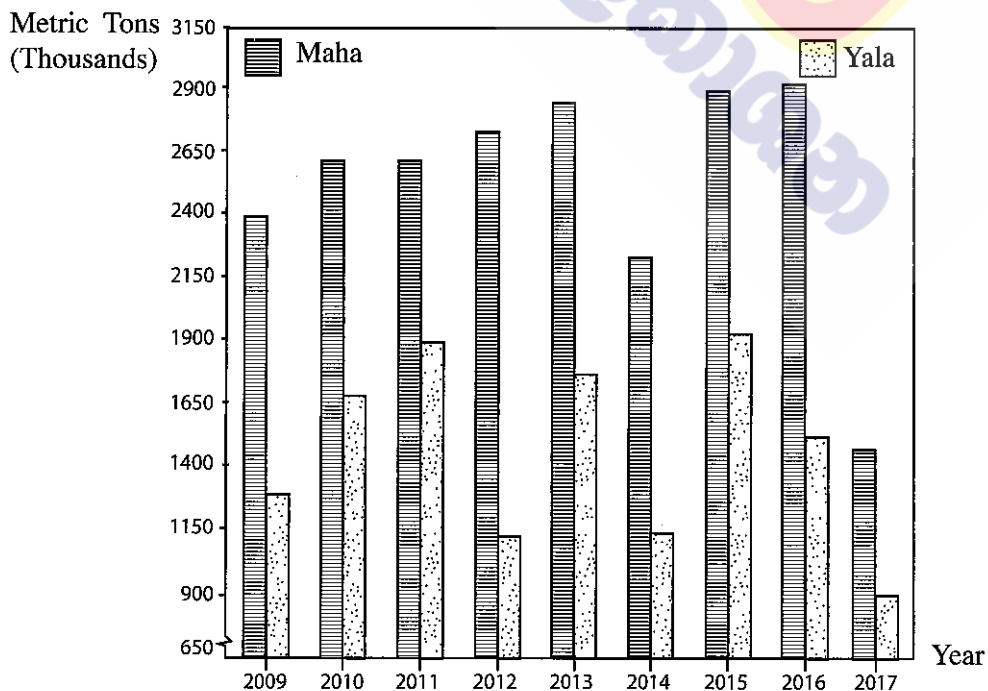


- Read each statement from No. 11 to 15 and circle C if it is correct and circle W if it is incorrect.
- 11. Wheat is a major crop cultivated under plantation agriculture. C / W
- 12. About 28% of the cropland of Sri Lanka is devoted to coconut cultivation. C / W
- 13. China is the dominant country in the production and export of steel. C / W
- 14. Radawadunna is of special importance for the mask industry in Sri Lanka. C / W
- 15. Of the soil types of Sri Lanka, the Red Brown Earth is limited only to the dry zone. C / W
- In questions from No. 16 to No. 26 fill the blanks with suitable words.
- 16. The lowest amount about 5.2% of the total population of Sri Lanka is in the Province of
- 17. The country with the highest human development among the SAARC countries is
- 18. According to the classification of natural hazards earthquakes and Tsunami belong to the hazard category.
- 19. The country where the Hekla volcano is located is
- 20. The Great Barrier Reef is formed with rocks.
- 21. The forest which is located in South America is the largest rainforest in the world.
- 22. Sri Lanka has been divided into tourism zones by the Tourism Development Board of Sri Lanka.
- To answer the questions from No. 23 to No. 26, use the graph given below.

Production of Paddy in Yala and Maha Seasons in Sri Lanka, 2009 – 2017



Source: Central Bank of Sri Lanka, Economic and Social statistics of Sri Lanka-2018

[See page three

- 23. The highest paddy production in the Maha season has been in the year
- 24. The lowest paddy production in the Yala season has been in the year
- 25. In relative terms, it was in the year that the highest production of paddy has been recorded in both Yala and Maha seasons.
- 26. The widest gap in paddy production between Yala and Maha seasons has been recorded in the year

● In questions from No. 27 to 30, two columns are shown as A and B. On the dotted line write the number of the answer that shows the correct order when the information given in column A is matched with the information given in column B.

27. **A** Major oceans
 1. Atlantic ocean
 2. Indian ocean
 3. Pacific ocean

B Seas located
 A - Yellow sea
 B - Caribbean sea
 C - Andaman sea
 D - White sea

(1) B, C, A (2) B, C, D (3) C, D, A (4) D, B, C (.....)

28. **A** Mineral types
 1. Kaolin
 2. Ilmanite
 3. Graphite

B Location of deposits
 A - Bogala
 B - Pulmoddai
 C - Eppawala
 D - Boralesgamuwa

(1) A, B, C (2) C, D, B (3) D, B, A (4) D, C, A (.....)

29. **A** Wildlife Reserves
 1. National Parks
 2. Strict Natural Reserves
 3. Sanctuaries

B Locations
 A - Uda walava
 B - Weeravila
 C - Sinharaja
 D - Hakgala

(1) A, C, B (2) A, D, B (3) B, A, C (4) B, C, D (.....)

30. **A** Country
 1. United States of America
 2. Brazil
 3. South Korea

B Million city
 A - Philadelphia
 B - Seoul
 C - Shanghai
 D - Rio de Janeiro

(1) A, D, B (2) A, D, C (3) B, C, D (4) D, A, B (.....)

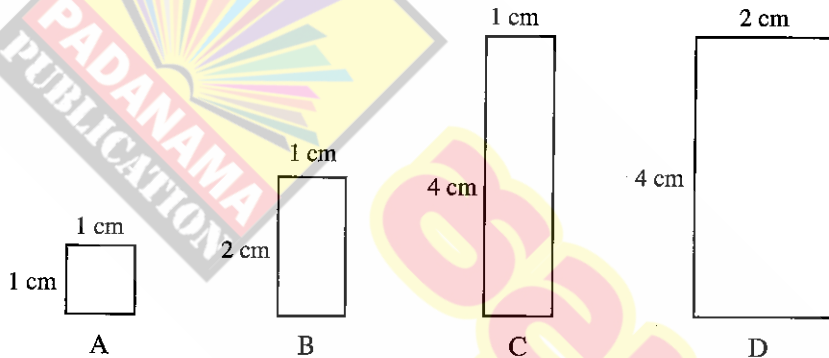
● For each question from No. 31 to 36, select the correct or the most appropriate answer from the four answers given and write its number on the dotted line provided against it.

31. A research centre for pulses is located in
 (1) Matale. (2) Angunakolapelessa.
 (3) Gannoruwa. (4) Bataatha. (.....)

32. Select the answer that contains two types of sedimentary rocks.
 (1) Coal, gypsum. (2) Granite, basalt.
 (3) Diamonds, dolomite. (4) Limestones, gabbro. (.....)

[See page four

33. According to the classification of minerals, a mineral that belong to the **non-metal** group is
 (1) rutile. (2) manganese. (3) iron ore. (4) graphite. (.....)
34. Select the flora and fauna group that could be found only in the tropical rain forests.
 (1) Plants with soft timber and straight trunks, Moose, Tiger
 (2) Plants with hard cores, tiger, wolf
 (3) Plants with needle like leaves, Reindeer, Moose
 (4) Plants with broad and plenty of leaves, gorilla, tiger (.....)
35. A few criteria used for measures of development are given below.
 ● Life expectancy at birth
 ● Literacy
 ● Per capita gross national product adjusted to purchasing power
 The measure of development formulated using above criteria is
 (1) Physical Quality of Life Index (PQLI). (2) Human Poverty Index (HPI). (.....)
 (3) Human Development Index (HDI). (4) Human Suffering Index (HSI).
36. The following four diagrams A, B, C and D show the length and width of four paddy tracts depicted in a map drawn at the scale 1:50,000.



Select the diagram with the letter that shows the paddy tract with an area of 1 km².

- (1) A (2) B (3) C (4) D (.....)
- Carefully study the combinations of related topics given in A, B, C and D below, and answer the questions from No. 37 to 40.
- | | |
|------------------------------|----------------------|
| A - 1. Industrialization | B - 1. Education |
| 2. Acid rain | 2. Human resource |
| C - 1. Environmental balance | D - 1. Globalization |
| 2. Sustainable development | 2. Development |
37. What is the answer that contains the combination of related topics stating that the second is essential for the existence of the first?
 (1) A (2) B (3) C (4) D (.....)
38. What is the combination of related topics that suggests the first will be responsible for the development in the second?
 (1) A (2) B (3) C (4) D (.....)
39. What is the combination of related topics that indicates the second is an unfavourable consequence of the first?
 (1) A (2) B (3) C (4) D (.....)
40. What is the combination of related topics that suggests the first could result in favourable as well as unfavourable consequences in the second?
 (1) A (2) B (3) C (4) D (.....)

* *

[See page five

සියලු ම හිමිකම් ඇවිරිණි / முழுப் பதிப்புரிமையுடையது / All Rights Reserved]

ශ්‍රී ලංකා විභාග දෙපාර්තමේන්තුව ශ්‍රී ලංකා විභාග දෙපාර්තමේන්තුව ශ්‍රී ලංකා විභාග දෙපාර්තමේන්තුව ශ්‍රී ලංකා විභාග දෙපාර්තමේන්තුව ශ්‍රී ලංකා විභාග දෙපාර්තමේන්තුව
 இலங்கைப் பரீட்சைத் திணைக்களம் இலங்கைப் பரීட்சைத் திணைக்களம் இலங்கைப் பரීட்சைத் திணைக்களம் இலங்கைப் பரීட்சைத் திணைக்களம் இலங்கைப் பரීட்சைத் திணைக்களம்
 Department of Examinations, Sri Lanka Department of Examinations, Sri Lanka Department of Examinations, Sri Lanka Department of Examinations, Sri Lanka Department of Examinations, Sri Lanka
 61 E I, II

අධ්‍යයන පොදු සහතික පත්‍ර (සාමාන්‍ය පෙළ) විභාගය, 2018 දෙසැම්බර්
 கல்விப் பொதுத் தராதரப் பத்திர (சாதாரண தர)ப் பரீட்சை, 2018 டிசெம்பர்
 General Certificate of Education (Ord. Level) Examination, December 2018

භූගෝල විද්‍යාව I, II
 புவியியல் I, II
 Geography I, II

Geography II

- * This paper consists of two parts - I and II.
- * The question in Part I is compulsory. All three parts of it, namely (a), (b) and (c) should be answered.
- * Four questions from Part II should be answered.
- * The total number of questions to be answered is five.

Part I

1. (a) Study the 1 : 50 000 topographic map section provided to you and answer the following questions based on it. In answering, use the paper (page No. 8) provided to you. For questions from No. (i) to (iii), select the appropriate answer from the parentheses and write it.
 - (i) What is shown by No. ① ?
(Rock / Quarry / Conical hill) (01 mark)
 - (ii) What is shown by No. ② ?
(Forests / Other plantations / Sanctuary) (01 mark)
 - (iii) What is shown by No. ③ ?
(Narrow gauge railway / Broad gauge single railway / Broad gauge double railway) (01 mark)
 - (iv) What is the main commercial crop cultivated in the area? (01 mark)
 - (v) What is the administrative boundary that extends along the main river in the map area? (01 mark)
 - (vi) A settlement is shown in quadrant A. Name two government institutions that provides general services indicated by symbols in it. (02 marks)
 - (vii) What is the major human factor that has influenced the area in quadrant A to make it a settlement? (01 mark)
 - (viii) Correctly name the latitude that extends across the location X. (01 mark)
 - (ix) What is the physical factor that has influenced the distribution of paddy cultivation in the map area? (01 mark)
- (b) Carefully study the world map provided to you and answer the questions given below. In answering, use the column of boxes located adjacent to the map. (page No. 9)
 Three English letters are given in front of each question from (i) to (v). Select the letter that indicates the correct answer for each question from the world map and write it in the adjacent box.
 - (i) **Baltic Sea** – A, B, C
 - (ii) **Sumatra island** of Indonesia where the 2018 Asian Games were held – D, E, F
 - (iii) **Atacama cold desert** – G, H, J
 - (iv) **Lake Baikal** considered as the world's deepest lake – K, L, M
 - (v) **Tanzania** an African country which is important for Graphite production – P, Q, R (05 marks)

[See page six

(c) Carefully study the map of Sri Lanka provided to you and answer the questions given below. In answering, use the column located adjacent to the map of Sri Lanka. (Page No. 9)

Three English letters are given in front of each question from No. (i) to (v). Select the letter that indicates the correct answer for each question from the map and write it in the adjacent box.

(i) **Kerawalapitiya**, where a Thermal power station is located – **A, B, C**

(ii) **District of Vavuniya** – **D, E, F**

(iii) **Agalawatte**, where the Rubber Research Institute is located – **G, H, J**

(iv) **Meetiyaogoda**, where a Kaolin deposit is located – **K, L, M**

(v) **Pasikuda Beach**, a tourist attraction – **P, Q, R**

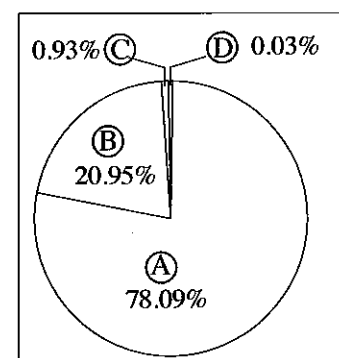
(05 marks)

Part II

2. (i) The percentage values of major types of gases in the Earth's atmosphere are shown in the adjacent diagram as (A), (B), (C) and (D). Name the **two** major gas types shown by (A) and (B) respectively. (02 marks)

(ii) State **three** major characteristics of the Troposphere. (03 marks)

(iii) Name **three** human activities that have resulted in the pollution of the atmosphere and describe in brief the effects of one of them. (05 marks)



3. (i) Of the agricultural land use methods, name respectively,

(a) the mostly cultivated commercial grain crop in the world

(b) the major grain crop grown as a labour intensive cultivation in Asian countries (02 marks)

(ii) State **three** salient features associated with the commercial dairy farming in the world. (03 marks)

(iii) (a) Name a place where a Paddy Research Institute is located in Sri Lanka.

(b) Describe **two** salient features of the paddy cultivation practised in the Wet Zone of Sri Lanka. (05 marks)

4. (i) Name **two** factors that influence the location of manufacturing industries. (02 marks)

(ii) State **three** environmental problems associated with the world's manufacturing industries. (03 marks)

(iii) (a) Name **two** products associated with petro-chemical industry in Sri Lanka.

(b) Briefly explain **two** advantages and **one** disadvantage that occur in the development of petro-chemical industry. (05 marks)

5. (i) Name **two** crops that belong to the 'spice' group of the traditional minor export crops cultivated in Sri Lanka. (02 marks)

(ii) State **three** reasons for the attention paid to the development of minor export crop cultivation in Sri Lanka. (03 marks)

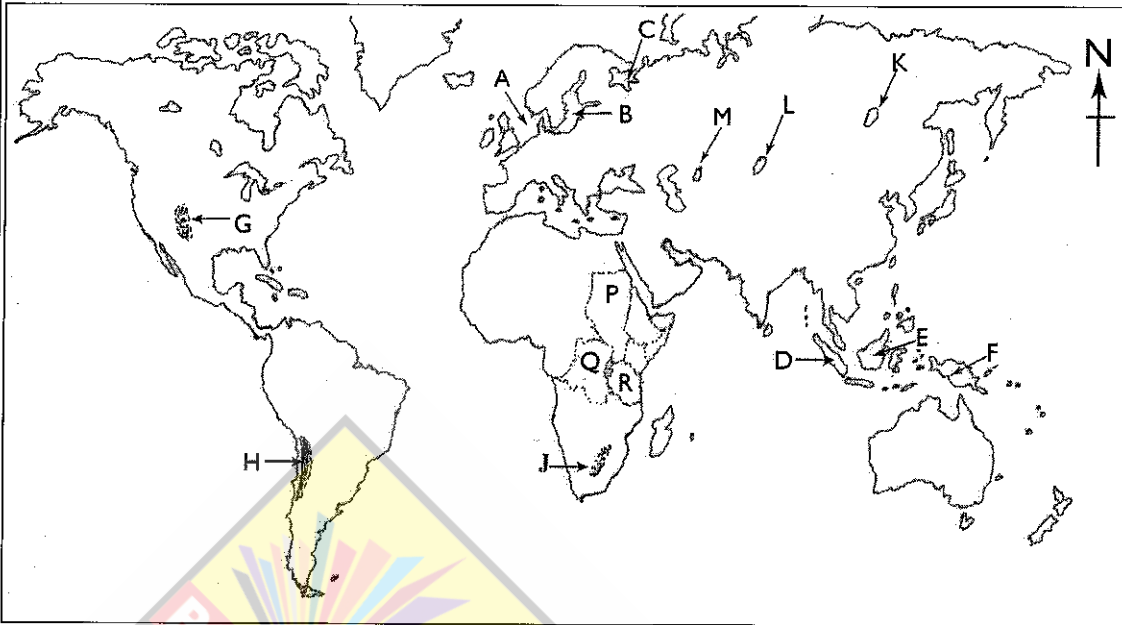
(iii) (a) Name **two** non-traditional minor export crops of Sri Lanka.

(b) Describe **three** measures that have been taken by the government of Sri Lanka to develop minor export crop cultivation. (05 marks)

[See page seven

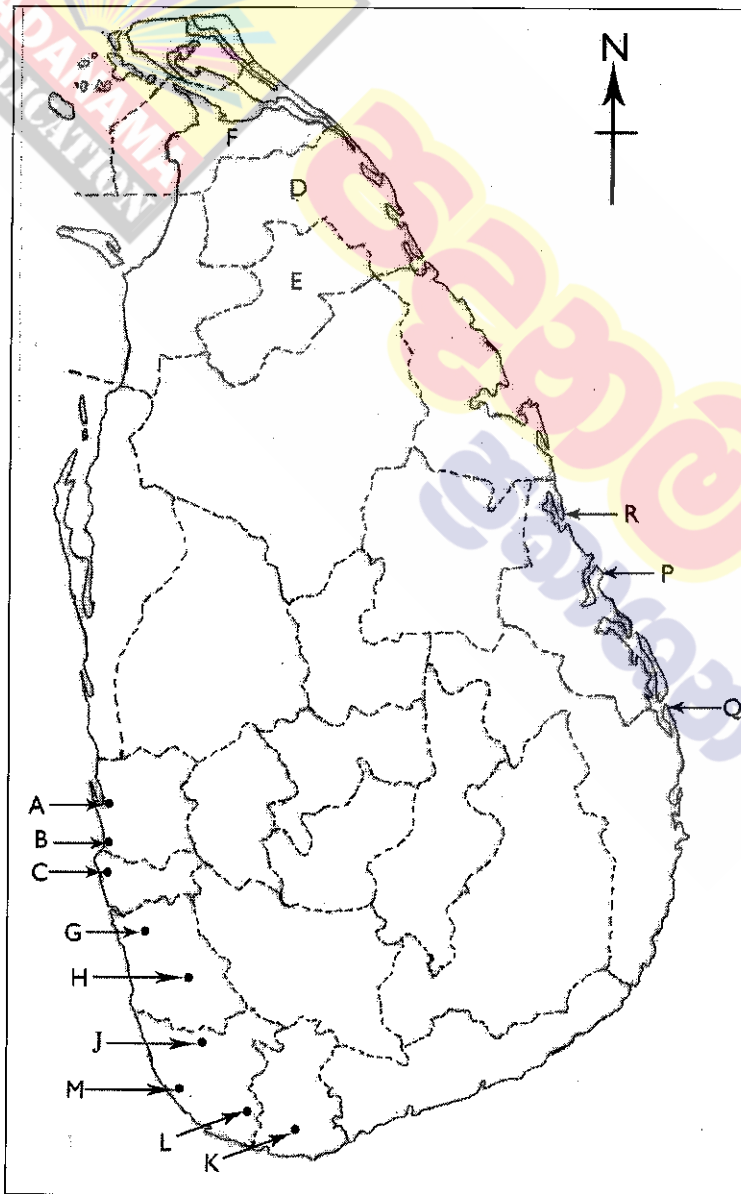
6. 'Land' is very important among the natural resources of Sri Lanka and with the islands located around, it has a land area of 65610 km².
- (i) Name **two** islands that belong to Sri Lanka. (02 marks)
- (ii) State **three** problems associated with the land use in Sri Lanka. (03 marks)
- (iii) State **three** land conservation techniques practised in Sri Lanka and briefly describe one of them. (05 marks)
7. (i) Name respectively,
- (a) the continent in which about 60% of the world population is distributed.
- (b) the continent in which about 10% of the world population is distributed. (02 marks)
- (ii) State **three** special characteristics that could be found in the zones of population concentration of the world. (03 marks)
- (iii) (a) Name **one** physical factor and **one** human factor that have affected the uneven distribution of the world population.
- (b) Explain how physical factors have affected the distribution of population in Sri Lanka with the aid of **two** examples. (05 marks)
8. Five criteria used for measuring development are given below.
- Gross Domestic Product
 - Real Gross National Product
 - Human Development Index
 - Rate of growth of Gross National Product
 - Human Poverty Index
- (i) Name **two** criteria that belong to the modern group of measures of development. (02 marks)
- (ii) It is essential to develop human resources in order to accelerate the development process of a country. Name **three** areas to which special attention should be focussed in the development of human resources in Sri Lanka. (03 marks)
- (iii) Of the three areas you have mentioned in (ii) above, describe in brief **two** measures that have been taken recently for the development in one of them. (05 marks)

(ආ) / (ඈ) / (b)



- (i)
- (ii)
- (iii)
- (iv)
- (v)

(ඉ) / (ඔ) / (c)



- (i)
- (ii)
- (iii)
- (iv)
- (v)

1. (ඉ) (ඔ) (c) $\frac{1}{10}$ (ආ) (ඈ) (b) $\frac{1}{5}$ (ඉ) (ඔ) (c) $\frac{1}{5} = \frac{1}{20}$

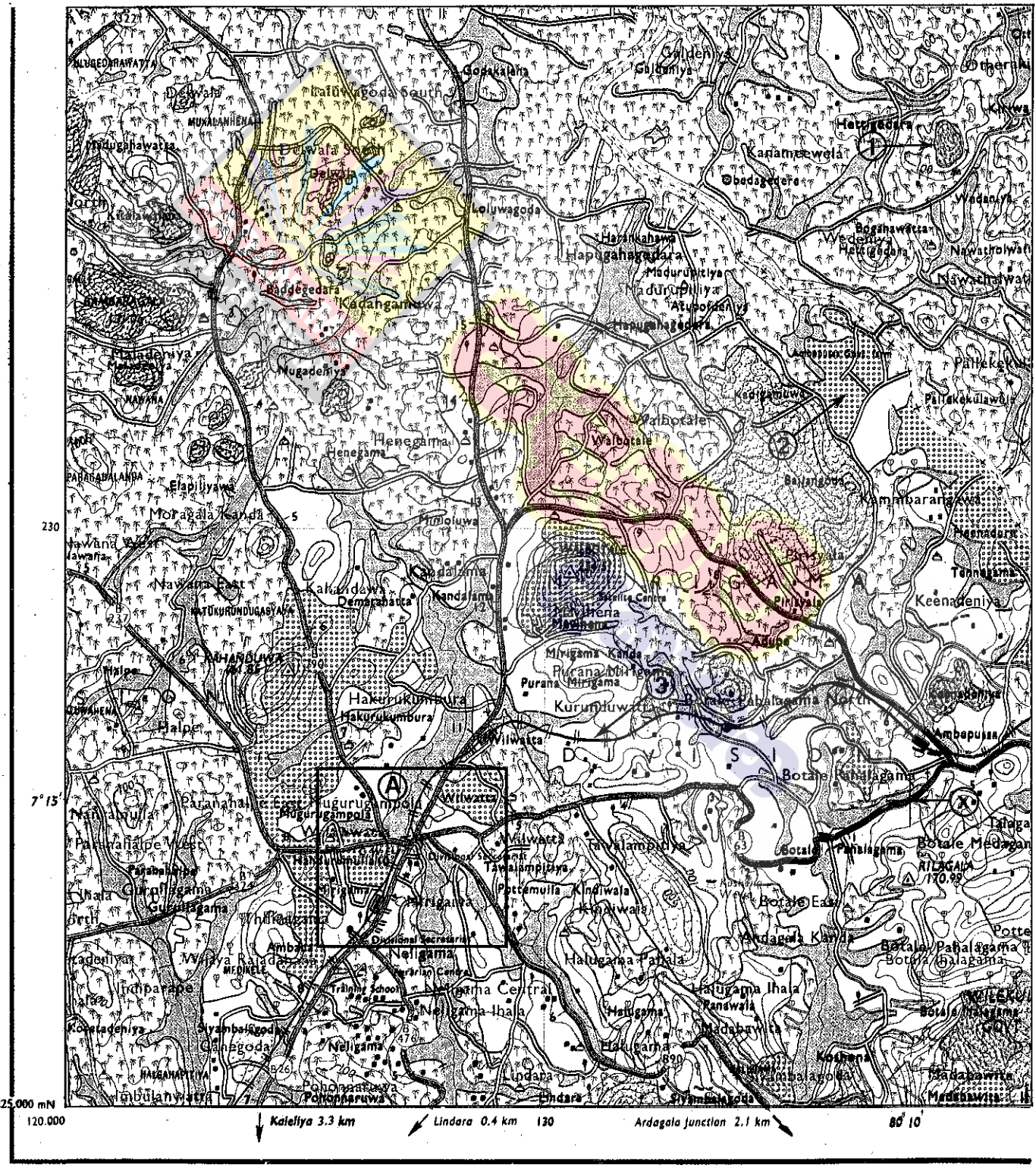
ශ්‍රී ලංකා විභාග දෙපාර්තමේන්තුව ශ්‍රී ලංකා විභාග දෙපාර්තමේන්තුව ශ්‍රී ලංකා විභාග දෙපාර්තමේන්තුව ශ්‍රී ලංකා විභාග දෙපාර්තමේන්තුව ශ්‍රී ලංකා විභාග දෙපාර්තමේන්තුව
 இலங்கைப் பரீட்சைத் திணைக்களம் இலங்கைப் பரීட்சைத் திணைக்களம் இலங்கைப் பரීட்சைத் திணைக்களம் இலங்கைப் பரීட்சைத் திணைக்களம் இலங்கைப் பரීட்சைத் திணைக்களம்
 Department of Examinations, Sri Lanka Department of Examinations, Sri Lanka Department of Examinations, Sri Lanka Department of Examinations, Sri Lanka Department of Examinations, Sri Lanka
 ශ්‍රී ලංකා විභාග දෙපාර්තමේන්තුව ශ්‍රී ලංකා විභාග දෙපාර්තමේන්තුව ශ්‍රී ලංකා විභාග දෙපාර්තමේන්තුව ශ්‍රී ලංකා විභාග දෙපාර්තමේන්තුව ශ්‍රී ලංකා විභාග දෙපාර්තමේන්තුව
 இலங்கைப் பரීட்சைத் திணைக்களம் இலங்கைப் பரීட்சைத் திணைக்களம் இலங்கைப் பரීட்சைத் திணைக்களம் இலங்கைப் பரීட்சைத் திணைக்களம் இலங்கைப் பரීட்சைத் திணைக்களம்
 Department of Examinations, Sri Lanka Department of Examinations, Sri Lanka Department of Examinations, Sri Lanka Department of Examinations, Sri Lanka Department of Examinations, Sri Lanka

61 II

3253

අධ්‍යයන පොදු සහතික පත්‍ර (සාමාන්‍ය පෙළ) විභාගය, 2018 දෙසැම්බර්
 கல்விப் பொதுத் தராதரப் பத்திர (சாதாரண தர)ப் பரீட்சை, 2018 டிசெம்பர்
 General Certificate of Education (Ord. Level) Examination, December 2018

භූගෝල විද්‍යාව II / புவிமியல் II / Geography II



SCALE : 1 : 50000

10 සහ 11 ශ්‍රේණි සඳහා ග්‍රන්ථ නාමාවලිය

(අ.පො.ස) සාමාන්‍ය පෙළ 11 ශ්‍රේණිය - කෙටි සටහන්

සිංහල මාධ්‍ය

- 10-11 සිංහල ව්‍යාකරණ
- 10-11 සිංහල සාහිත්‍යය රසාස්වාදය
- බුද්ධ ධර්මය
- කතෝලික ධර්මය
- සිංහල භාෂාව හා සාහිත්‍යය
- සිංහල සාහිත්‍යය සංග්‍රහය
- English Language
- ගණිතය - 1
- ගණිතය - 2
- ජීව විද්‍යාව
- භෞතික විද්‍යාව
- රසායන විද්‍යාව
- ඉතිහාසය
- ව්‍යාපාර හා ගිණුම්කරණ අධ්‍යයනය
- භූගෝල විද්‍යාව
- පුරවැසි අධ්‍යාපනය
- පෙරදිග සංගීතය
- නර්තනය
- නාට්‍ය හා රංග කලාව
- චිත්‍ර කලාව
- තොරතුරු හා සන්නිවේදන තාක්ෂණය
- සන්නිවේදනය හා මාධ්‍ය අධ්‍යයනය
- සෞඛ්‍යය හා ශාරීරික අධ්‍යාපනය
- කෘෂි හා ආහාර තාක්ෂණය
- ගෘහ ආර්ථික විද්‍යාව

11 ශ්‍රේණිය - ප්‍රශ්නෝත්තර

සිංහල මාධ්‍ය

- සිංහල භාෂාව හා සාහිත්‍යය
- බුද්ධ ධර්මය
- ඉතිහාසය
- ව්‍යාපාර හා ගිණුම්කරණ අධ්‍යයනය
- පුරවැසි අධ්‍යාපනය

Grade 11 - Short Notes

English Medium

- Buddhism
- Mathematics - 1
- Mathematics - 2
- Biology
- Physics
- Chemistry
- History
- Business & Accounting Studies
- Geography
- Civic Education
- ICT
- Health & Physical Education
- 10-11 English Literary (Poetry)
- 10-11 English Literary (Drama)
- 10-11 English Literary (Short Story)

Grade 11 - Model Papers

English Medium

- Civic Education

10 ශ්‍රේණිය - කෙටි සටහන්

සිංහල මාධ්‍ය

- බුද්ධ ධර්මය
- කතෝලික ධර්මය
- සිංහල භාෂාව හා සාහිත්‍යය
- සිංහල සාහිත්‍යය සංග්‍රහය
- සිංහල රචනා අත්වැල
- English Language
- ගණිතය - 1
- ගණිතය - 2
- ජීව විද්‍යාව
- භෞතික විද්‍යාව
- රසායන විද්‍යාව

Grade 10 - Short Notes

English Medium

- ඉතිහාසය
- ඉතිහාසය රූප සටහන් අග්‍රිත කෙටි සටහන්
- ව්‍යාපාර හා ගිණුම්කරණ අධ්‍යයනය - 1
- ව්‍යාපාර හා ගිණුම්කරණ අධ්‍යයනය - 2
- භූගෝල විද්‍යාව
- පුරවැසි අධ්‍යාපනය
- පෙරදිග සංගීතය
- නර්තනය
- නාට්‍ය හා රංග කලාව
- චිත්‍ර කලාව
- තොරතුරු හා සන්නිවේදන තාක්ෂණය
- සන්නිවේදනය හා මාධ්‍ය අධ්‍යයනය
- සෞඛ්‍යය හා ශාරීරික අධ්‍යාපනය
- කෘෂි හා ආහාර තාක්ෂණය
- ගෘහ ආර්ථික විද්‍යාව
- ජපන් භාෂාව

- Buddhism
- Mathematics - 1
- Mathematics - 2
- Biology
- Physics
- Chemistry
- History
- Business & Accounting Studies - 1
- Business & Accounting Studies - 2
- Geography
- Civic Education
- ICT
- Health & Physical Education

10 ශ්‍රේණිය - ප්‍රශ්නෝත්තර

සිංහල මාධ්‍ය

- සිංහල භාෂාව හා සාහිත්‍යය
- බුද්ධ ධර්මය
- ගණිතය
- විද්‍යාව
- ඉතිහාසය
- පුරවැසි අධ්‍යාපනය
- භූගෝල විද්‍යාව
- පෙරදිග සංගීතය

Grade 10 - Model Papers

English Medium

- Mathematics
- Science
- Civic Education
- Geography
- English Activity Book
- English Work Book

අනෙකුත් ග්‍රන්ථ

- හෙළදිව කතිකාවත
- අරුණශාන්ත අමරසිංහ
- හොල්මන් අවතාර සහ යකඳුරන්
- අරුණශාන්ත අමරසිංහ
- සිසු-ගුරු අත්පොත නාට්‍ය හා රංග කලාව 10-11 ශ්‍රේණි සඳහා (නව විෂය නිර්දේශය) - තන්දන අල්ගේවත්ත

පාඩමෙන් පාඩමට මාසික ඇගයීම්

සිංහල මාධ්‍ය

- 10-ශ්‍රේණිය - විද්‍යාව
- 11-ශ්‍රේණිය - විද්‍යාව

සියලු ම ශ්‍රේණි සඳහා කෙටි සටහන්, ප්‍රශ්න පත්‍ර කට්ටල සහ වැඩ පොත් අප සතුව තිබෙන අතර, මෙම ඕනෑම ග්‍රන්ථයක් වට්ටම් සහිත ව ඔබේ නිවසට ම ගෙන්වා ගත හැකි ය.